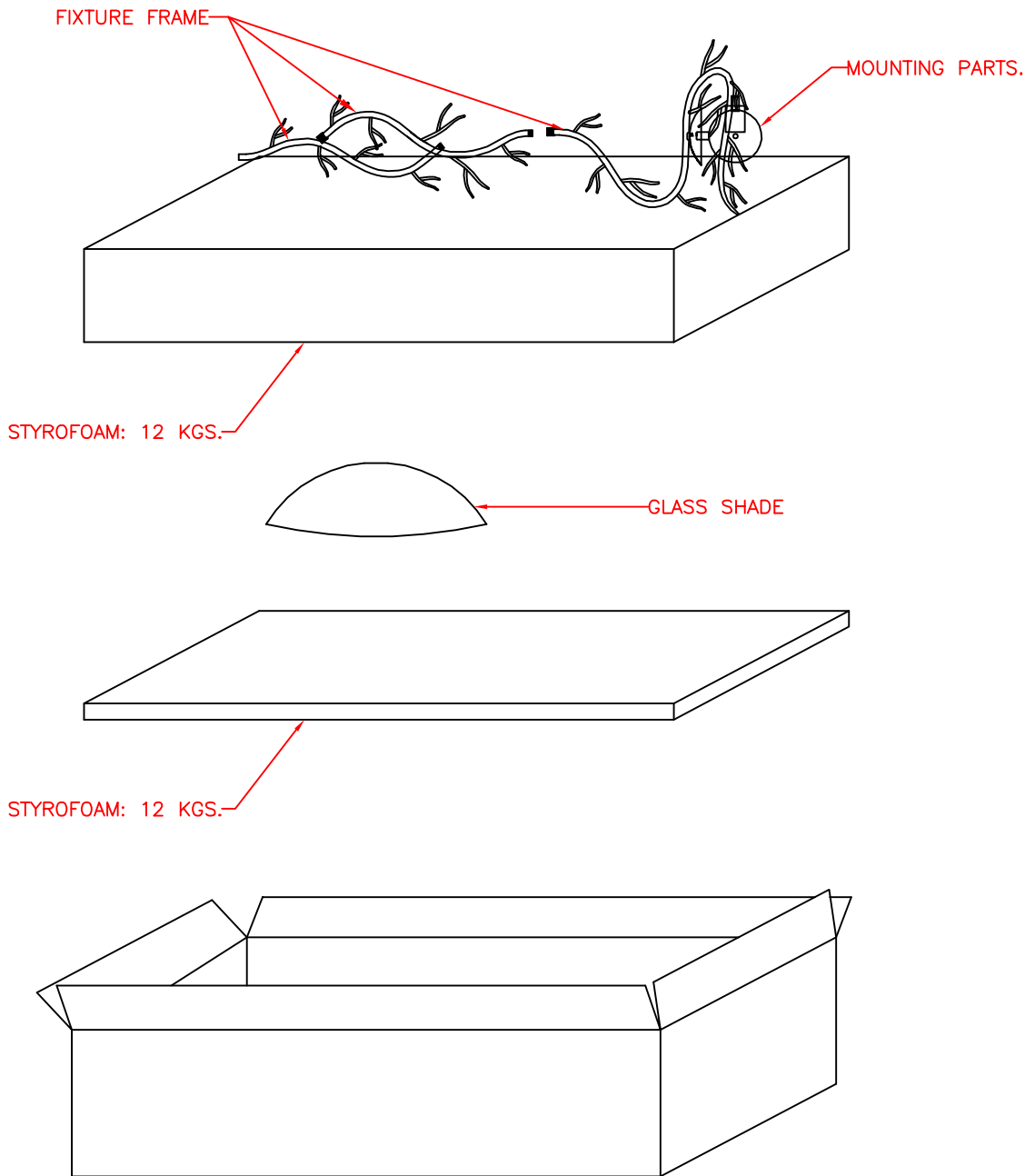


MODEL: 90903

PACKING DIAGRAM



MODEL: 90903BRZ

ASSEMBLY INSTRUCTIONS

READ AND SAVE THESE INSTRUCTIONS

TOOLS

YOU WILL NEED THE FOLLOWING TOOLS OR EQUIPMENT:
SCREWDRIVER, ADJUSTABLE WRENCH, WIRE CUTTERS, PLIERS.

UNPACK THE FIXTURE

TO PROTECT THE FINISH, PLACE ALL PARTS ON A SOFT SURFACE. YOU SHOULD HAVE RECEIVED THE FOLLOWING: GLASS SHADE, BACK PLATE, FIXTURE FRAME, NUT, BALL FINIAL.

MOUNTING HARDWARE PACKAGE:

SHORT AND LONG NIPPLES, CROSSBAR, GREEN GROUND SCREW, (3) WIRE CONNECTORS, (2) 8-32 x 1 1/4" SCREWS, (3) PLASTIC ANCHORS, (3) 1-1/2" WOOD SCREWS AND FINIAL.

FIXTURE ASSEMBLY

1. SCREW THE FIXTURE FRAME TOGETHER, MAKE SURE NOT TO TWIST THE CORD INSIDE.

NOTE: IF USING POWER CORD FOLLOW INSTRUCTIONS BELOW. IF WIRING TO AN OUTLET BOX PROCEED TO NEXT PAGE.

IF FASTENING WITH ANCHOR TO DRYWALL

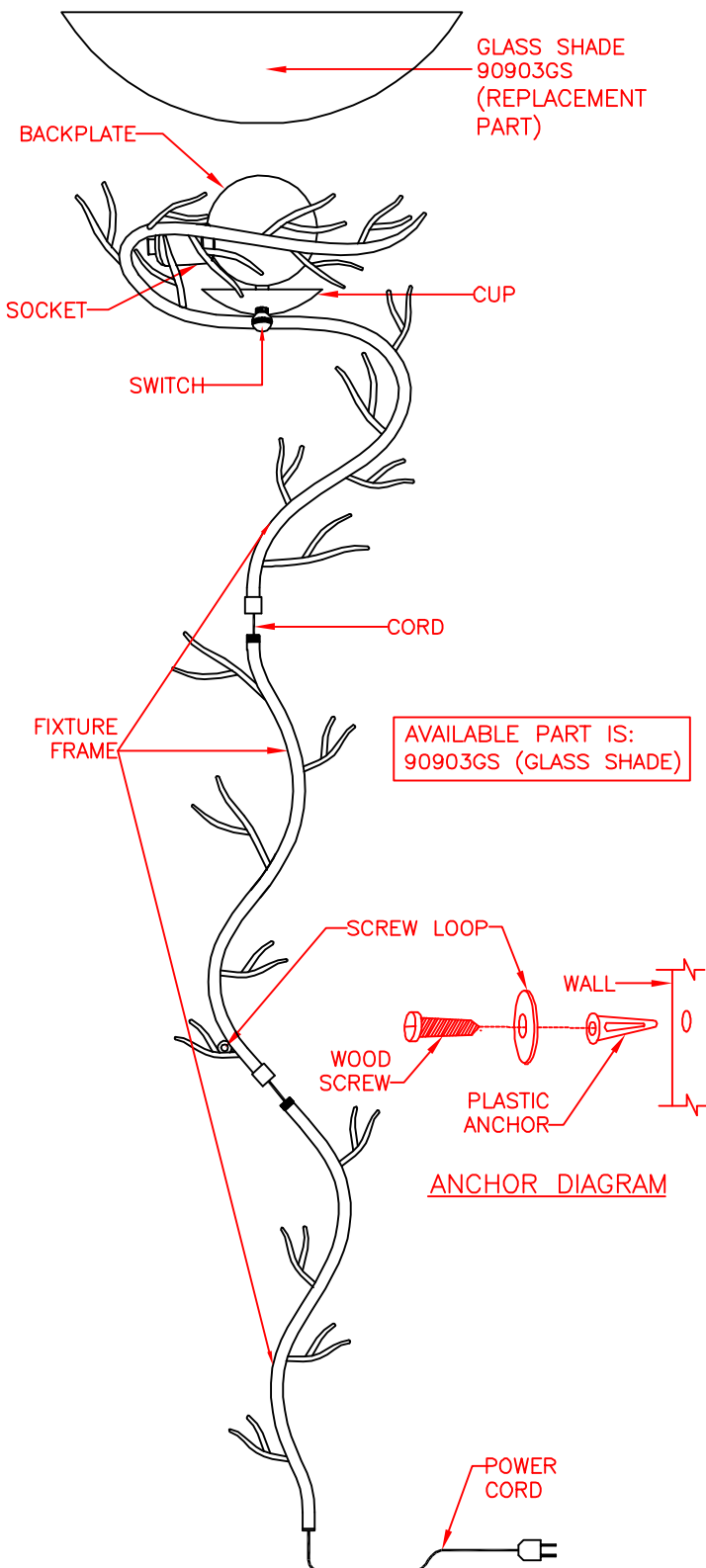
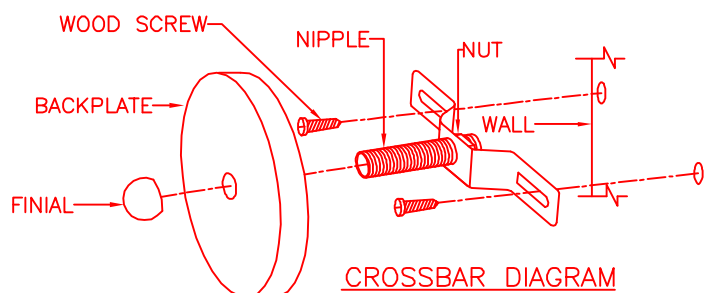
1. POSITION THE FIXTURE ON THE WALL AT DESIRED LOCATION AND MARK THE PLACE FOR THE ANCHORS TO BE INSTALLED.
2. DRILL PILOT HOLES ON THE MARKED SPOTS AND INSERT PLASTIC ANCHORS.
3. ATTACH SHORT NIPPLE TO THE CROSSBAR. ATTACH THE CROSSBAR TO THE ANCHORS AND SECURE WITH 1-1/2" WOOD SCREWS. SEE DIAGRAM AND INSTRUCTIONS BELOW.
4. RAISE FIXTURE TO WALL. LINE UP CENTER HOLE OF BACKPLATE WITH NIPPLE AND SECURE WITH FINIAL.

IF FASTENING WITH WOOD SCREWS TO STUD

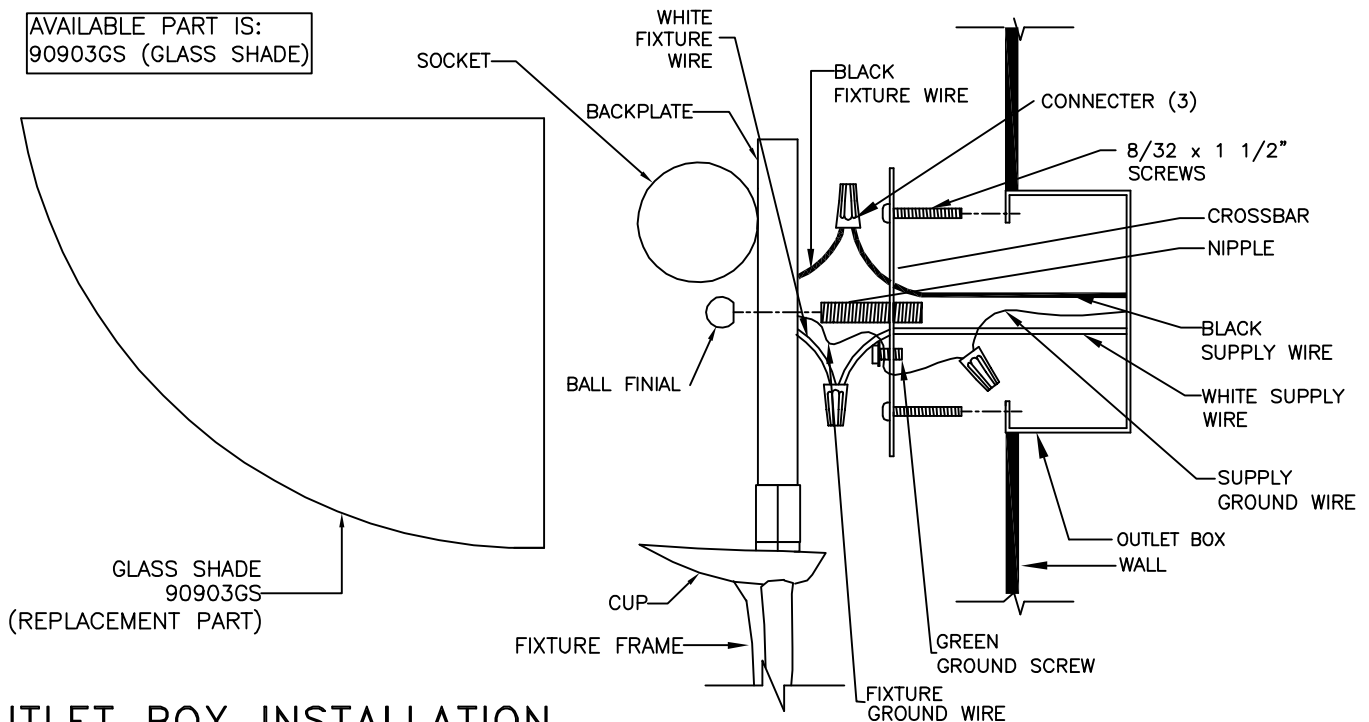
1. POSITION THE FIXTURE ON THE WALL AT DESIRED LOCATION AND MARK THE PLACE FOR THE WOOD SCREWS TO BE INSTALLED.
2. ATTACH SHORT NIPPLE TO THE CROSSBAR, SECURE THE CROSSBAR TO THE WALL WITH (2) 1-1/2" WOOD SCREWS. SEE DIAGRAM AND INSTRUCTIONS BELOW.
3. RAISE FIXTURE TO WALL. LINE UP CENTER HOLE OF BACKPLATE WITH NIPPLE AND SECURE WITH FINIAL.

FINAL ASSEMBLY

1. ATTACH FIXTURE FRAME TO WALL, SECURE THE LOWER FIXTURE FRAME TO THE WALL WITH WOOD SCREW. SEE ANCHOR DIAGRAM AND INSTRUCTIONS.
2. INSTALL 100 WATT MAXIMUM MEDIUM BASE BULB (NOT INCLUDED) INTO SOCKET.
3. PLACE SHADE ON CUP.
4. PLUG CORD INTO AND OUTLET AND TURN ON AT SWITCH.



AVAILABLE PART IS:
90903GS (GLASS SHADE)



OUTLET BOX INSTALLATION

READ AND SAVE THESE INSTRUCTIONS

CAUTION: TO AVOID POSSIBLE ELECTRIC SHOCK, MAKE SURE THE ELECTRICITY IS SHUT OFF AT THE MAIN PANEL. IF YOU ARE REPLACING AN EXISTING FIXTURE, FIRST TURN THE FIXTURE OFF. NEXT, TURN THE WALL SWITCH OFF. FINALLY, GO TO THE MAIN FUSE OR BREAKER BOX IN YOUR HOME. TURN THE FUSE OR BREAKER TO THE OFF POSITION. SOME TYPES OF FUSES MUST BE UNSCREWED TO SHUT OFF THE POWER.

* ALL WIRING MUST BE DONE IN ACCORDANCE WITH NATIONAL AND LOCAL ELECTRIC CODES.

** IF YOU DO NOT HAVE ELECTRICAL WIRING EXPERIENCE, HAVE YOUR FIXTURE INSTALLED BY A QUALIFIED LICENSED ELECTRICIAN.

*** THIS FIXTURE IS TO BE MOUNTED TO A UL LISTED OUTLET BOX CAPABLE OF SUPPORTING THE WEIGHT OF THIS FIXTURE. THE OUTLET BOX MUST BE DIRECTLY SUPPORTED BY THE BUILDING STRUCTURE.

TOOLS: YOU WILL NEED THE FOLLOWING TOOLS OR EQUIPMENT: SCREWDRIVER, PLIERS, ADJUSTABLE WRENCH.

NOTE: IF WIRING TO OUTLET BOX FOLLOW INSTRUCTIONS BELOW. IF USING POWER CORD, PROCEED TO NEXT PAGE.

UNPACK THE FIXTURE

TO PROTECT THE FINISH, PLACE ALL PARTS ON A SOFT SURFACE. YOU SHOULD HAVE RECEIVED THE FOLLOWING: FIXTURE FRAME, SHADE, RUBBER WASHER, METAL WASHER, NUT.

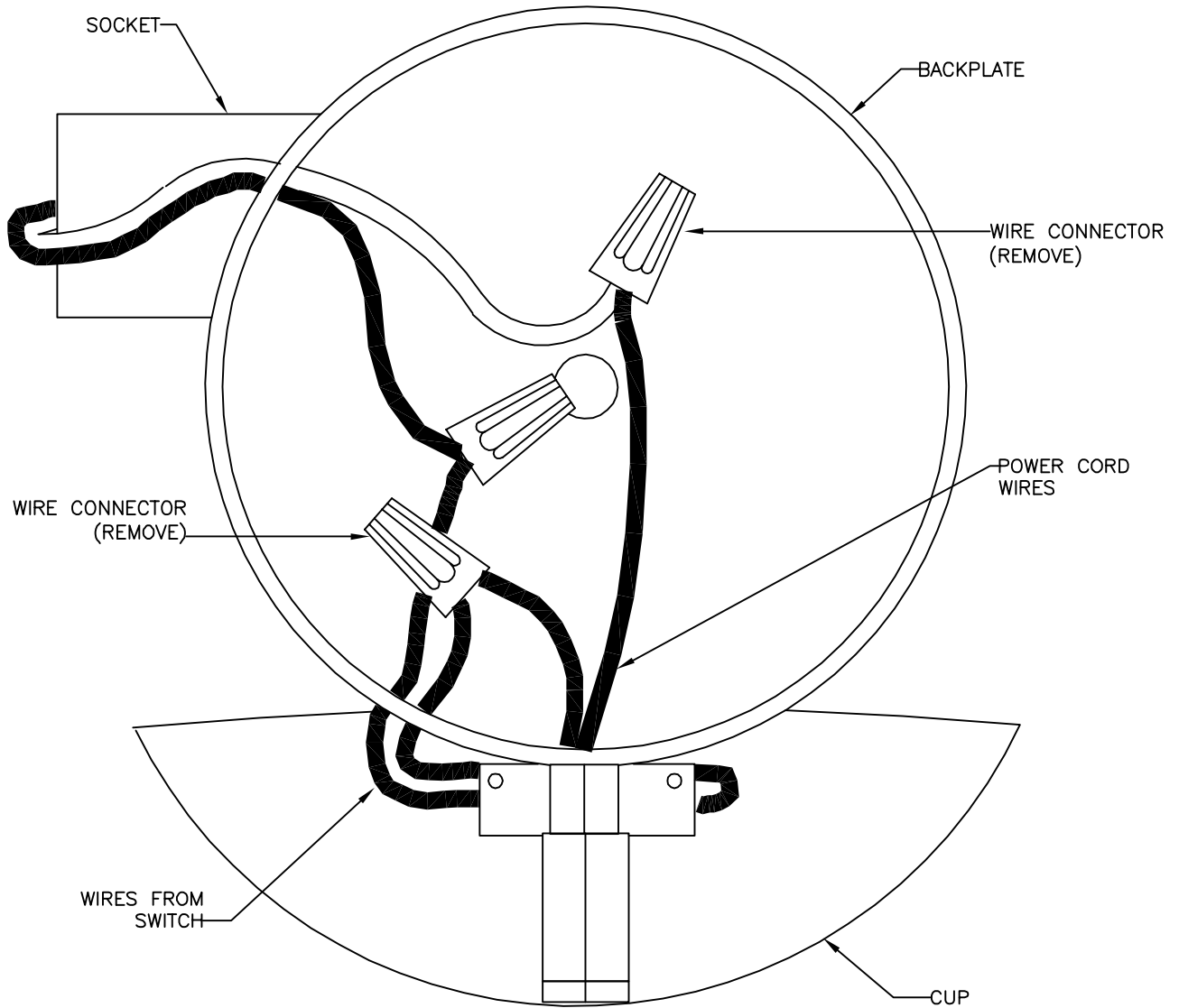
HARDWARE PACK: CROSSBAR, (2) 8-32 x 1 1/2" SCREWS, (3) WIRE CONNECTORS, GREEN GROUND SCREW, NIPPLE, BALL FINIAL.

INSTALL THE FIXTURE

1. REMOVE POWER CORD. (SEE DETAIL NEXT PAGE).
2. SCREW BOTTOM HALF OF FIXTURE FRAME INTO TOP HALF.
3. ATTACH LONG NIPPLE TO CROSSBAR. ATTACH CROSSBAR TO OUTLET BOX USING TWO SCREWS PROVIDED WITH THE OUTLET BOX. (NOTE: IF THE SCREWS WITH THE OUTLET BOX ARE TOO SHORT, USE THE (2) 8-32 x 1 1/4" SCREWS PROVIDED IN THE MOUNTING HARDWARE PACKAGE).
4. CONNECT THE WHITE OR RIBBED FIXTURE WIRE TO THE WHITE SUPPLY WIRE IN THE OUTLET BOX USING THE TWIST-ON WIRE CONNECTOR PROVIDED. CONNECT THE BLACK OR SMOOTH FIXTURE WIRE TO THE BLACK SUPPLY WIRE IN THE SAME MANNER. INSTALL THE FIXTURE GROUND WIRE UNDER THE GREEN GROUND SCREW ON THE CROSSBAR THEN CONNECT THE FIXTURE GROUND WIRE TO THE SUPPLY GROUND WIRE IN THE OUTLET BOX USING THE TWIST-ON WIRE CONNECTOR PROVIDED.
5. RAISE FIXTURE TO THE WALL AND CAREFULLY TUCK THE WIRES INSIDE THE OUTLET BOX. SPREAD THE ELECTRICAL SPLICES SO THAT THE BLACK WIRES ARE ON ONE SIDE OF THE OUTLET BOX AND THE WHITE WIRES ARE ON THE OTHER SIDE. LINE UP NIPPLE WITH HOLE IN CENTER OF BACKPLATE AND SECURE WITH BALL FINIAL.
6. ATTACH FIXTURE FRAME TO WALL, SECURE THE LOWER FIXTURE FRAME TO THE WALL WITH WOOD SCREW. SEE ANCHOR DIAGRAM AND INSTRUCTIONS.
7. CAREFULLY PLACE SHADE ON CUP.
8. INSTALL A 100 WATT MAX. MEDIUM BASE TYPE "A" BULB (NOT INCLUDED) INTO SOCKET.
9. RESTORE POWER. YOUR NEW FIXTURE IS NOW READY TO USE.



REAR VIEW OF BACKPLATE



REMOVING THE POWER CORD

* THE POWER CORD IS THE WIRE THAT RUNS THROUGH FIXTURE FRAME AND ENTERS THROUGH THE BOTTOM OF BACKPLATE.

1. REMOVE THE (2) WIRE CONNECTORS THAT CONNECT TO POWER CORD BY TWISTING COUNTER CLOCKWISE. (SEE DIAGRAM)
2. UNTIE SAFETY KNOT AND PULL POWER CORD OUT THROUGH BOTTOM OF FIXTURE FRAME.
3. FOLLOW INSTRUCTIONS ON OUTLET BOX INSTALLATION FOR WIRING TO AN OUTLET BOX.

