

## PRODUCT SPECIFICATIONS

### OVERALL ASSEMBLED DIMENSIONS

HEIGHT: 22 CM (8-5/8"), WIDTH: 30.3 CM (11-7/8") DIA.

**1 LIGHT:** UL LISTED. 100 WATT. MEDIUM BASE E-26 CERAMIC SOCKETS WITH SOCKET RING.

**CANOPY:** PLATED STEEL, 30.3 CM (11-7/8") DIA. x 5 CM (2") HEIGHT. (2) HOLES IN CANOPY FOR MOUNTING SCREWS TO PASS THROUGH.

**GLASS SHADE:** CLEAR BLOWING GLASS SHADE, 29.2 CM (11-1/2") DIA. MAX. x 19.1 CM (7-1/2") HEIGHT, SHAPED AS SHOWN.

**SUPPLY WIRE:** UL LISTED. 18 AWG, 105°C, MUST EXTEND A MINIMUM OF 15.2 CM (6") FROM CENTER OF CANOPY, BLACK/WHITE COLOR, COPPER MATERIAL. WIRES MUST BE LEAD FREE.

**LABELS:** UL AND CSA OR CUL, MANUFACTURE DATE, MODEL # AND COUNTRY OF ORIGIN LABELS PROVIDED ON INSIDE OF CANOPY. WARNING LABEL FOR PARTS AND PARTS ARROW LABEL WERE STUCK ON INSIDE OF BOX. RELAMPING LABEL FOR 100 WATT TYPE "A" BULB PROVIDED NEAR SOCKET.

### PACKAGING AND SHIPPING DETAILS

THE ITEM IS DISASSEMBLED FOR SHIPPING AS SHOWN. EACH PART IS SECURED SO THEY CAN NOT MOVE DURING SHIPPING.

HARDWARE PACK #005 PROVIDED. ENTIRE FIXTURE IS COVERED IN A CLOSED PLASTIC BAG WITH A SMALL BAG OF SILICA INSIDE.

THE CARTON IS MADE OF DOUBLE WALL CORRUGATED CARDBOARD "A MA A". BROWN IN COLOR. THE INNER PACKING IS DIE-CUT CARDBOARD OR STYROFOAM TO PROTECT AND SECURE THE FIXTURE AND MUST PASS THE FEDEX AND ISTA-3A DROP TEST REQUIREMENTS.

EACH CARTON SHALL BE PRINTED WITH A LINE DRAWING AND THE KENROY HOME NAME AND LOGO, MODEL NUMBER AND FINISH, EACH CARTON SHALL BE PROVIDED A UPC LABEL. THE UPC BAR CODE AS FOLLOWS: 053392127534.

### OTHER DETAILS

ALL METAL PARTS MUST MATCH FINISH UNLESS OTHERWISE SPECIFIED.

MODEL 91837CLR INSTALLATION INSTRUCTIONS ARE TO BE PACKED WITH FIXTURE, AND BE PRINTED CLEARLY ON QUALITY PAPER.

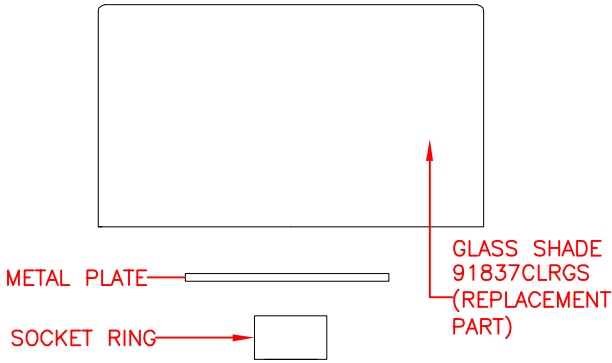
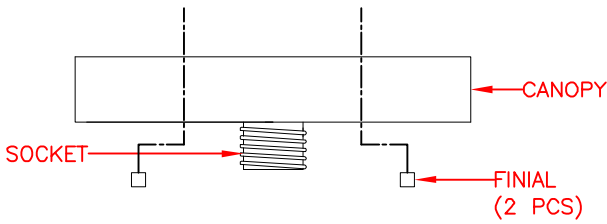
ALL BAGS MUST BE LABELED WITH OFFICIAL "THIS BAG IS NOT A TOY" STATEMENT.

ASSEMBLY TIME: 10 MINUTES.

THE UL NUMBER IS E344897.

DIMS OF BOX: 36 CM (14-3/16") LENGTH x 36 CM (14-3/16") WIDTH x 30 CM (11-13/16") HEIGHT. (CUFT.: 1.37')

NET WEIGHT: 13.6 LBS. GROSS WEIGHT: 17.9 LBS.



AVAILABLE PART IS:  
91837CLRGS (GLASS SHADE)



FIXTURE ASSEMBLED VIEW

**KENROY  
HOME**

3723 Regent Boulevard  
JACKSONVILLE, FL. 32224  
PHONE: 904-642-4340  
FAX: 904-642-4150

THIS DOCUMENT AND THE INFORMATION THAT IT DISCLOSES IS THE EXCLUSIVE PROPERTY OF KENROY HOME. ANY REPRODUCTION OR USE OF THIS DRAWING IN PART OR IN WHOLE, WITHOUT THE EXPRESS CONSENT OF THE PROPRIETOR IS PROHIBITED. © 2016 KENROY HOME.

DATE: 5/6/2016

SCALE: NONE

DRAWN BY: HENRY

REFERENCE:  
CAPRI 1 LIGHT FLUSH MOUNT

APPROVAL:

REVISION DATE:

REVISION DATE:

REVISION DATE:

REVISION DATE:

MODEL #:

91837CLR

FINISHES:

CHROME

PAGE: 1 OF 1